

TENDER BULLETIN

NO. 29/2016/17 FY

21 OCTOBER 2016



LIMPOPO

PROVINCIAL GOVERNMENT
REPUBLIC OF SOUTH AFRICA

This document is also available on the internet on the following website:

www.limtreasury.gov.za

Provincial Supply Chain Management Office

TABLE OF CONTENTS

	Page No.
1. REPORTING FRAUDULENT AND CORRUPT ACTIVITIES.....	03
2. INSTRUCTIONS.....	04
3. BID INVITATIONS FOR SUPPLIES, SERVICES AND DISPOSALS	05 – 06
4. BID INVITATION CANCELLED	
5. SPECIAL NOTICES.....	07 – 12
ANNEXURE 1: ADDRESS LIST AND CONTACT DETAILS: PROVINCIAL DEPARTMENTS.....	13
ANNEXURE 2: ADDRESS LIST AND CONTACT DETAILS: PUBLIC ENTITIES.....	14
ANNEXURE 3: ADDRESS LIST AND CONTACT DETAILS: PROVINCIAL TREASURY TENDER ADVISE CENTRES	15
ANNEXURE 4: ADDRESS LIST AND CONTACT DETAILS: SATELLITE OFFICES	16

REPORT

**FRAUDULENT & CORRUPT ACTIVITIES ON GOVERNMENT
PROCUREMENT SYSTEM**

National Anti-Corruption @ 0800 701 701

**Security and Investigating Services – Limpopo Provincial Treasury @
015 298 7196**

ALL COMPLAINTS/CONCERNS RELATED TO SCM NON-COMPLIANCE

MUST BE REPORTED TO:

LIMPOPO PROVINCIAL TREASURY

PRIVATE BAG X 9486

POLOKWANE

0700

**PROVINCIAL TREASURY, FINANCE HOUSE, 56 – 58 PAUL KRUGER
STREET, POLOKWANE**

2. INSTRUCTIONS

1. Bidders are advised to read the entire tender bulletin.
2. Tenders for procurement of supplies, services and disposals are categorized as follows:

SUPPLIES

- Accommodation, leasing of
- Audio visual equipment
- Building material
- Chemicals: Agricultural/Forestry/
- Laboratory/Water Care
- Clothing/Textiles
- Computer equipment
- Computer software
- Electrical equipment
- Electronic equipment
- Furniture
- General
- Medical
- Office equipment: Labour-saving devices
- Perishable provisions
- Stationary/printing
- Steel
- Timber
- Vehicle (all types)
- Workshop equipment

SERVICES

- Building
- Civil
- Electrical
- Functional (including cleaning-, and security services)
- General
- Maintenance of electrical, mechanical equipment and plumbing
- Mechanical
- Professional
- Repair and maintenance of vehicles
- Transport

DISPOSALS

- Clothing and textiles
- Furniture
- General
- Scrap metal
- Vehicles

3. Bid documents are generally available in English only.
4. The address where a bid document is available from and where it must be submitted to may differ.
5. The addresses at which bid documents may be obtained and to which tenders must be posted, appear in Annexure 1.
6. The address list of various Supply Chain Management Advice Centres at which bid documents and tender bulletins may also be obtained, appear in Annexure 3; and
7. The address list of Supply Chain Management satellite offices at which tender bulletins may also be obtained, appear in Annexure 4.

3. BID INVITATIONS FOR SUPPLIES, SERVICES AND DISPOSALS

BID NO.	DESCRIPTION OF SERVICE OR SUPPLIES	CONTACT DETAILS	BID DOCUMENT PRICE (NON-REFUNDABLE)	DUE AT 11H00	BID DOCUMENTS OBTAINABLE FROM	POST OR DELIVER BIDS TO
					See Annexure 1 & 2, Page 13 – 14	
EDET 216/16	Appointment of potential Service Provider to develop an Environmental Management Framework(EMF) for Capricorn District Compulsory Briefing Session: N/A Economic Development, Environment and Tourism	BIDDING PROCESS Mr. FF Ramoraswi @ 015 293 8759 or Ms. Linda Mothunsi @ 015 293 8766 TECHNICAL ASPECTS Mr.Victor Mongwe @ 082 412 5605	R80-00	21/11/2016	109	109
EDET 217/16	Appointment of Service Provider to develop an Environmental Management Framework(EMF) for Vhembe District Compulsory Briefing Session: N/A Economic Development, Environment and Tourism	BIDDING PROCESS Mr. FF Ramoraswi @ 015 293 8759 or Ms. Linda Mothunsi @ 015 293 8766 TECHNICAL ASPECTS Mr.Victor Mongwe @ 082 412 5605	R80-00	21/11/2016	109	109
HEDP797/16	Supply, delivery, installation, repair and maintenance of Mini Province Orthopaedic Drill in the Department of Health: Limpopo Department of Health	BIDDING PROCESS Mr. N Kabe@ 015 293 6635 Ms. NM Motene @ 015 293 6352 TECHNICAL ASPECTS Ms. M Matjila @ 015 287 5000/5910	R80-00	14/11/2016	103	103

PRDP 31/2016	Evaluation of the HIV & Aids, STI's and TB Provincial Strategies Plan 2012-2016 and Development of the HIV & Aids, STI's and TB Provincial Strategic Plan 2017-2022 Compulsory Briefing Session: Date:27/10/2016 Time:11H00 Venue: Old Cabinet Boardroom (40 Hans van Rensberg, Street Polokwane, Limpopo Province) Office of the Premier	BIDDING PROCESS N.Mavhunga @ 015 287 6000 TECHNICAL ASPECTS Email @ ltenders@premier.lim popo.gov.za	R80-00	11/11/201 6	102	102
-----------------	--	---	--------	----------------	-----	-----

5. SPECIAL NOTICES

5.1 (SCM Advice Centers): LIMPOPO PROVINCIAL TREASURY
 ADVERTISEMENTS OF LIMPOPO CSD CALL CENTRE LINES FOR SUPPLIERS IN THE TENDER BULLETIN:-

LIMPOPO CSD CALL CENTRE LINES FOR SUPPLIERS

DISTRICT	CALL CENTRE NUMBER	OFFICIAL RESPONSIBLE	TIME
Capricorn	015 291 8737	Mr.Holeni TI	07H30 TO 16H30
Mopani	015 812 0256	Ms. Nxumalo P	07H30 TO 16H30
Sekhukhune	013 265 0171	Mrs Morena MM	07H30 TO 16H30
Vhembe	015 962 0014	Mrs. Nefolovhodwe MQ	07H30 TO 16H30
Waterberg	014 717 1376	Mrs. Tsatsi AT	07H30 TO 16H30

5.2 LIST OF AWARDED BIDS- DEPARTMENT OF AGRICULTURE AND RURAL DEVELOPMENT

BID NO.	DESCRIPTION	AWARDED BIDDER	AMOUNT	TOTAL POINTS ATTAINED	DATE AWARDED
DEPARTMENT OF AGRICULTURE					
ACDP 15/25	Appointment of implementing Agent for the Management of Construction of Soil Conservation Structures at Ga-Kgatla in Blouberg Municipality in the Capricorn District for the period of three years	The Mvula Trust	R364 800-00	90.00	23/09/2016
ACDP 16/13	Supply, install, delivery of 4X higher availability Department of Agriculture and Rural Development	Sizwe IT Group Pty (Ltd)	R1 011 717-32	77.20	23/09/2016
ACDP 16/04	Construction of a New Academic Area with Lecture Halls, Computer Laboratories, Ablution facilities and Offices with Services and Paving for Madzivhandila Agriculture College of in the Thulamela Municipality of Vhembe District	JJ & Company JV Shao Holdings	R26 306 237-58	99.00	04/10/2016

5.3. RESULTS OF AWARDED BID: EDET 177/ 2015: ECONOMIC DEVELOPMENT

TENDER NUMBER	DESCRIPTION OF SERVICE	COMPANY NAME	BID AMOUNT	POINTS FOR PRICE	B-BBEE SCORE	TOTAL POINTS SCORED	DATE AWARDED
EDET184/2016	Physical Security Services at Dzanani, Malamulele, Makhado, Tshitale, Mutale, Thohoyandou, Tshilwavusiku and Vhuwani Revenue offices	Mmaketse Projects	R3 577 000.32	90.00	10.00	100.00	30/09/2016
EDET185/2016	Physical Security Services at Lephallale, Mankweng, Modimolle, Mokerong, Mokopane, Thabamooop and Thabazimbi Revenue Office	Tshepang Enterprise Construction	R3 129 875.28	90.00	10.00	100.00	30/09/2016
EDET186/2016	Renovations of existing Laundry facilities, construction of linen and cutlery store and entrance gate at Acacia Park in Thohoyandou	Lilithalethu J/V Matimane	R2 000 830.18	90.00	10.00	100.00	30/09/2016
EDET187/2016	Construction of Staff Housing (10 X Bachelor Units) at Makuya Nature Reserve	Matiadi Construction (Pty) Ltd	R9 674 881.78	90.00	10.00	100.00	30/09/2016

LIMPOPO PROVINCIAL TENDER BULLETIN NO. 28/2016/17 FY, 21 OCTOBER 2016

EDET188/2016	Construction of new laundry building and ablution block at Nwanedi Resort	Lilithalethu Trading 41 cc	R3 786 126.96	90.00	10.00	100.00	30/09/2016
EDET189/2016	Physical Security Services at Bolobedu, Hlanganani, Namakgale, Naphuno, Ritavi and Tzanani Revenue Office	Mhangani Security Services	R2 682 750.24	90.00	10.00	100.00	30/09/2016
EDET190/2016	Rehabilitation of Paris Guest House, construction of pickets and ablutions at Lekgalameetse Nature Reserve	Lilithalethu Trading 41 cc J/V	R11 992 210.43	90.00	10.00	100.00	30/09/2016
EDET191/2016	Appointment of a Potential Service Provider to develop Bioregional Plan at Vhembe District in Limpopo	Nuleaf Consulting & Planning	R445 925.90	90.00	0.00	90.00	30/09/2016
EDET192/2016	Supply and delivery of 5 X Jetty Boats with Engines for Biodiversity Survey in Dams and rivers	Malemosha Business Enterprise	R700 000.00	90.00	10.00	100.00	22/09/2016
EDET193/2016	Supply and delivery of 5 X Patrol Boats with engines for law enforcement of Dam in Nature Reserves	My Granny General Trading	R2 280 000.00	90.00	10.00	100.00	22/09/2016

LIMPOPO PROVINCIAL TENDER BULLETIN NO. 28/2016/17 FY, 21 OCTOBER 2016

EDET194/ 2016	Supply and delivery of 10 X tractors, 10 X tractor drawn graders, 10 X flatbed trailers and 10 X slashers	African Green Loo Technology Sanitation Pty Ltd	R8 644 061.40	90.00	9.00	99.00	22/09/2016
EDET195/ 2016	Supply and Delivery of fire fighters	Beriam General Trading	R869 000.00	90.00	10.00	100.00	22/09/2016
EDET196/ 2016	Supply, installation and bunding of fuel tanks for various reserves	Soza Developers	R487 081.00	90.00	10.00	100.00	22/09/2016

6. ERRUTUM : ECONOMIC DEVELOPMENT

6.1 CORRECTION OF ADVERTISED BID NO. EDET 206, 207, 208, 209, 210, 211, 212, 213, 214 AND 215 /2016

The above said bids were advertised on the Tender Bulletin No. 28/2016/17 FY dated 14 October 2016 for your easy reference.

ERRATUM OF TENDER NO. EDET 206 - 215/16

Kindly be informed that the above tenders will no longer close on the 01 November 2016 but will close on the 14th November 2016

There will also be a compulsory briefing session tender no. EDET207/16 for Research and design of the construction of new market stalls in Limpopo Province scheduled as follows:

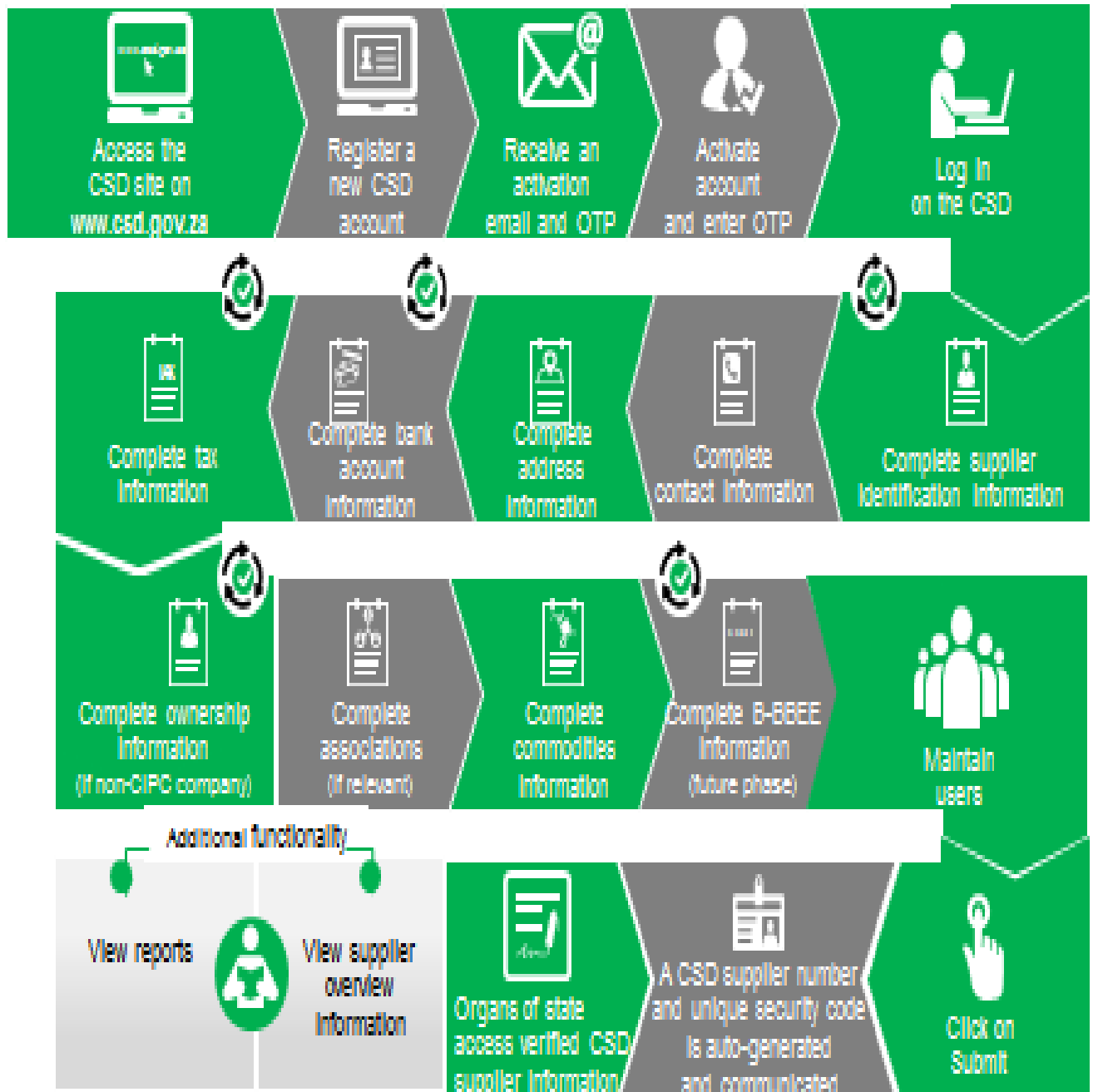
Date: 04 November 2016

Time: 10:30

Venue: Department of Economic Development, Environment & Tourism, 19 Biccard Street Polokwane
Consumer Court room, ground floor

For more information please contact Mr. Ramoraswi FF @ 015 293 8759 or Ms. Linda Mothutsi @ 015 293 8766

Supplier Self-Registration Process



Auto verification of supplier information with SARS, GIPC etc

ANNEXURE 1: ADDRESS LIST AND CONTACT DETAILS: LIMPOPO PROVINCIAL DEPARTMENTS

UNIQUE REF. NO.	BID DOCUMENT REFERENCE	CONTACT DETAILS	DOCUMENTS SOLD AT:	DOCUMENTS DEPOSITED AT
100	DSDP	Tel: 015 293 6000 Fax: 015 293 6211 Website: www.limpopo.gov.za	Department of Social Development , Office No. D3 Ground Floor, Old Capricorn Building, 18 College Street, POLOKWANE and all Provincial Treasury Tender Advice Centres	Deposited in the box located at Department of Health and Social Development, 18 College Street, Polokwane
101	LPT	Tel: 015 298 7000 Fax: 015 295 7010 Website: www.limpopo.gov.za	Provincial Treasury 46 Hans Van Rensburg Street, POLOKWANE and all Provincial Treasury Tender Advice Centres	Deposited in the bid box located outside a guard house at Ismini Towers, 46 Hans Van Rensburg Street, Polokwane
101A	TC/LP	Tel: 015 291 8400 Fax: 015 295 3310 Website: www.limpopo.gov.za	Provincial Treasury 56 – 58 Paul Kruger Street, POLOKWANE and all Provincial Treasury Tender Advice Centres	Deposited in the bid box located in the main entrance, Finance House Building, 56-58 Paul Kruger Street, Polokwane
102	PRDP	Tel: 015 287 6000 Fax: 015 295 3840 Website: www.limpopo.gov.za	Office of the Premier , 40 Hans van Rensburg Street, POLOKWANE and all SCM Advice Centres	Deposited in the bid box located at Mowaneng Building, 40 Hans van Rensburg Street, Polokwane
103	HEDP	Tel: 015 293 6000 Fax: 015 293 6211 Website: www.limpopo.gov.za	Department of Health , Office No. D3 Ground Floor, Old Capricorn Building, 18 College Street, POLOKWANE and all Provincial Treasury Tender Advice Centres	Deposited in the box located at Department of Health and Social Development, 18 College Street, Polokwane
104	LPEDT	Tel: 015 290 7600/1 Fax: 015 297 4494 Website: www.limpopo.gov.za	Department of Education , Corner 113 Biccand and 24 Excelsior Streets, POLOKWANE and all Provincial Treasury Tender Advice Centres	Deposited in the bid box located in the main entrance of corner 113 Biccand Street and Excelsior Street, Polokwane
105	PUDP	Tel: 015 295 1000 Fax: 015 295 1163 Website: www.limpopo.gov.za	Department of Roads & Transport , 40 Paul Kruger Street, POLOKWANE and all Provincial Treasury Tender Advice Centres	Deposited in the bid box located at 1 st Floor, Paul Kruger Wing, 40 Paul Kruger Street, Polokwane
106	DSSL	Tel: 015 290 2900 Fax: 015 291 4452 Website: www.limpopo.gov.za	Department of Safety, Security and Liaison , 32 Schoeman Street, POLOKWANE and all Provincial Treasury Tender Advice Centres	Deposited in the bid box located in the main entrance of 32 Schoeman Street, Polokwane
107	COGHSTA	Tel: 015 294 2000 Fax: 015 295 4190 Website: www.limpopo.gov.za	Department of Co-Operative Governance, Human Settlements & Traditional Affairs , 28 Market Street, Office No. G 74, Ground Floor, Polokwane.	Deposited in the bid box located at Hensa Towers, Cnr of Rabe and Landdros Mare Streets, Polokwane
108	DSAC	Tel: 015 284 4000 Fax: 015 284 4514 Website: www.limpopo.gov.za	Department of Sport, Arts and Culture Olympic Towers, Corner Rabe and Biccand Street, POLOKWANE and all Provincial Treasury Tender Advice Centre	Deposited in the bid box located in the main entrance of Olympic Towers, Corner 21 Rabe and Biccand Street, Polokwane
109	LEDET	Tel: 015 293 8300 Fax: 015 293 8319 Website: www.limpopo.gov.za	Department of Economic Development, Environment & Tourism , 90 Bok Street, POLOKWANE and all SCM Advice Centres	Deposited in the bid box located in the main entrance of Evridiki Towers, 20 Hans Van Rensburg Street, Polokwane
110	LDPW & WODP	Tel: 015 284 7000 Fax: 015 284 7031 Website: www.limpopo.gov.za	Department of Public Works , Works Towers, 43 Church Street, POLOKWANE and all Provincial Treasury Tender Advice Centres	Deposited in the bid box located at Corner Blaawberg and River Street Ladanna Polokwane 0699 Private Bag X9490 Polokwane 0700
111	ACDP	Tel: 015 294 3000/30/60/90/20 Fax: 015 294 4506 Website: www.limpopo.gov.za	Department of Agriculture , Temo Towers, 69 Biccand Street, POLOKWANE and all Provincial Treasury Tender Advice Centres	Deposited in the bid box located in the main entrance of AgriVillage, 69 Biccand Street, Polokwane

ANNEXURE 2: ADDRESS LIST AND CONTACT DETAILS: LIMPOPO PUBLIC ENTITIES

UNIQUE REF. NO.	BID DOCUMENT REFERENCE	CONTACT DETAILS	DOCUMENTS SOLD AT:	DOCUMENTS DEPOSITED AT
112	RFB: LIMP	Tel: 015 293 3621 Fax: 015 293 3660 Website: www.golimpopo.co	State Information Technology Agency (SITA) Limpopo Office, Moolman Building, 27 Market Street, POLOKWANE, 0699	Bid box located in the Main Entrance of Moolman Building, 27 Market Street, Polokwane
113	LTA	Tel: 015 293 3600 Fax: 015 293 3655 Website: www.golimpopo.com	Limpopo Tourism Agency , ERF 92/688, Portion 2 Southern Gateway, Ext 4, N1 Main Road, Polokwane 0699	Bid box located in the offices ERF 92/688, Portion 2 Southern Gateway, Ext 4, N1 Main Road, Polokwane 0699
114	LGB	Tel: 015 295 5581 Fax: 015 295 3566 Website: www.lgb.org	Limpopo Gambling Board , 22 Schoeman Street, POLOKWANE, from 08H30 to 16H00	Bid box located in the main entrance, ground floor, 22 Schoeman Street, Polokwane
115	TIL	Tel: 015 295 5171 Fax: 015 295 5197 Website: www.til.co.za	Trade and Investment Limpopo 130A Marshall Street, POLOKWANE, 0699	Bid box located in the main entrance, ground floor, 130 A Marshall Street, Polokwane
116	LIBSA	Tel: 015 287 3000 Fax: 015 297 6732 Website: www.libsa.co.za	Limpopo Business Support Agency , 06 Platinum Street, Ladine, POLOKWANE, 0700	Bid box located in the main entrance, 06 Platinum Street, Ladine, Polokwane
117	RAL	Tel: 015 284 4600 Fax: 015 284 4701 Website: www.ral.co.za	Road Agency Limpopo (RAL) , RAL Towers, 26 Rabe Street, POLOKWANE, 0700	Bid box located in the entrance foyer (ground floor) of RAL Towers, at 26 Rabe Street, Polokwane
118	LADC	Tel: 015 296 3543 Fax: 015 296 3549 Website: www.limpopo.gov.za	Limpopo Agribusiness Development Corporation , 29 Rhodes Drist Street, Bendor, POLOKWANE, 0699	Bid box located in the main entrance, 29 Rhodes Drist Street, Bendor, Polokwane,
119	GAAL	Tel: 015 288 0122 Fax: 015 288 0346 Website: www.gaal.co.za	Gateway Airports Authority Limited , N1 Road to Louis Trichardt, Army Base, POLOKWANE International Airport, Polokwane, 0700	Bid box located in the main entrance, ground floor of administration building, Polokwane International Airport, Army Base
120	VIVET	Tel: 015 963 3156 Fax: 015 963 3154 Website: www.fetcol@mweb.co.za	Vhembe FET College , Stand No. 203, Unit A, Sibasa, 0970, Limpopo Province	Vhembe Fet College, Central Office, Private Bag X2136, SIBASA 0970

ANNEXURE 3: ADDRESS LIST AND CONTACT DETAILS: PROVINCIAL TREASURY TENDER ADVICE CENTRES
 (Tender bulletins and bid documents are obtainable from the following Centers):

PROVINCIAL TREASURY SUPPLY CHAIN MANAGEMENT ADVICE CENTRES	
<p>HEAD OFFICE</p> <p>Provincial Supply Chain Management Office 56 – 58 Paul Kruger Street POLOKWANE Private Bag x9494 POLOKWANE, 0700 Tel No. (015) 291 8400</p> <p>Contact: Ms. M.B. Malope @ Tel: 015 291 8717/6</p>	<p>Capricorn SCM Advice Centre</p> <p>Limpopo Provincial Treasury 56-58 Paul Kruger Street Private Bag x9494 POLOKWANE, 0700 Tel No. (015) 291 8400</p> <p>Contact Person: Ms. M.M. Masindi</p>
<p>Vhembe SCM Advice Centre</p> <p>Limpopo Provincial Treasury Government Building Complex Office No. E006 THOHOYANDOU, VENDA Tel: (015) 962 1752 Fax: (015) 962 1282</p> <p>Contact Person: Ms. A. Budeli</p>	<p>Mopani SCM Advice Centre</p> <p>Limpopo Provincial Treasury Private Bag X 1973 GIYANI, 0826 Tel: (015) 812 0149 Fax: 086 219 7905</p> <p>Contact Person: Mr. M. B. Mbedzi</p>
<p>Waterberg SCM Advice Centre</p> <p>Limpopo Provincial Treasury 98 Nelson Mandela Street Decimale Building MODIMOLLE Tel: (014) 717 5837 Fax: (014) 717 5670</p> <p>Contact Person: Mr. P.E. Mogoroga</p>	<p>Sekhukhune SCM Advice Centre</p> <p>Limpopo Provincial Treasury Lefa Centre, Schoonoord Road JANE FURSE Tel: (013) 265 1344 Fax: (013) 265 1354</p> <p>Contact Person: Mr. M. S. Sehale</p>

ANNEXURE 4: ADDRESS LIST AND CONTACT DETAILS: SATELLITE OFFICES

(Tender bulletins are obtainable from the following centers)

CAPRICORN	VHEMBE	MOPANI	WATERBERG	SEKHUKHUNE
Lebowakgomo LIBSA	Dzanani Revenue Office Tel. No. (015) 970 4969	Namakgale Revenue Office Tel. No. (015) 761 3119	Libsa Thabazimbi: No.08 Riet Bok Street Tel. No. (014) 772 2437	Tubatse Libsa Tubatse Municipality Tel. No. (013) 231 8530
Seshego (Economic Dev. Offices Zone 8) Tel. No. (015) 223 7990	Malamulele Revenue Office Tel. No. (015) 871 0608	Ritavi DCO Tel. No. (015) 303 0455	Libsa Lephalale No. 3A Venter Street Tel. No. (014) 763 2834	Fetakgomo Libsa Fetakgomo Municipality Tel. No. (015) 622 8904
Ga-Thoka (Department of Economic Development)	Musina Revenue Office Tel. No. (015) 534 2713	Naphuno Magistrate Office Tel. No. (015) 355 4972	Bela-Bela Local Municipality (Bela-Bela) Tel. No. (014) 736 8000	Atok Thusong Service Centre Atok
Senoamadi Complex- Morebeng next to Taxi Rank-Economic Development Offices Contact Mr. Pheha @ 084 602 423	Mutale Revenue Office Tel. No. 072 252 7153	Lulekani Magistrate Offices Tel. No. (015) 783 0486	Mookgophong Local Municipality (Mookgopong) Tel.No. (014) 743 1111	Maatla-ke batho Libsa Marblehall Tel. No. (013) 261 2642
Bochum: LIBSA	Soutpansberg Revenue Office Tel. No. (015) 516 0002	Economic Development Offices in Tzaneen 20b Peace Street, Cnr Peace and Hermanus Tel. No. (015) 307 1195	Libsa Mokopane 90 Retief Street Tel. 015 491 8582 Fax: 015 491 8584	Seda Groblesdal Tel. No. (013) 262 3651
Mathabatha Tribal Authority Ga-Mathabatha	Tshilwavhusiku Revenue Office (015) 571 5277	Bolobedu Revenue Office Tel. No. (015) 328 3377		
Mafefe Tribal Authority MAFEFE	Tshitale Revenue Office Tel. No. (015) 975 1717	Hlanganani Revenue Office operating within Khomanani Tribal Authority at Majosi. Tel. No. 072 304 3916		
	Vuwani Revenue Office Tel. No. 072 058 1910			